



Title:

# Covet | Ever Art Wood® Decorative Wrapped Aluminium Batten Cladding

Rev:

8






Current as @:


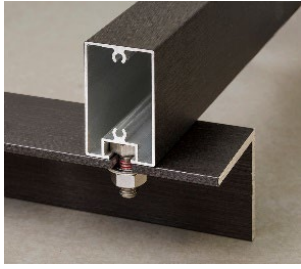
03/2024:

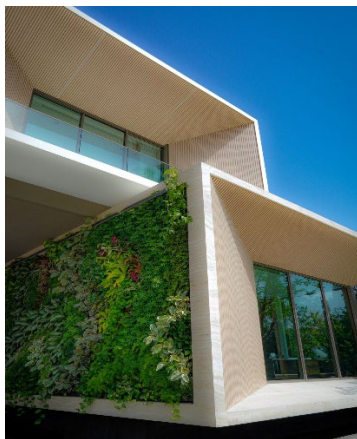
Product Overview				
Batten Composition	Extruded 6000 series aluminium with varying profiles, wall thicknesses and lengths. 0.2mm decorative printed, exterior grade polymer film, wrapped to aluminium surface.			
Batten Finish	Wood grain runs the length of battens. Cut edges are not enveloped with film.			
Batten Dimensions	Available in varying fixing methods, profiles, wall thicknesses and lengths. Visit covet.com.au to view the full range and selection.			
Country of origin	Japan			
Manufacturer's Quality Systems	Factories ISO 9001 certified CE Certified EN1090 and EN15088			
Test Laboratories	MTS, AWTA, Ignis Labs, JECTEC are Accredited Testing Laboratories			
Mechanical Properties	Standard	Test Result: Test machine Sintech 60/D		Testing Origin
	ASTM E9	Compression Test		MTS – Melbourne Testing Services, Australia
		Compressive strength	244 MPa	
		Yield Stress	190 MPa	
	AS1391-2007	Tensile Test		MTS – Melbourne Testing Services, Australia
		Tensile strength	258 MPa	
		Proof Stress	238 MPa	
	MTS Shear Test Procedure	Shear Test		MTS – Melbourne Testing Services, Australia
		Shear Strength	148 MPa	
		Yield Stress	124 MPa	
Fire Testing	Standard	Test Result		Testing Origin
	AS/NZ 1530.1	Aluminium type not deemed combustible		Ignis Labs, Australia
	AS/NZ 1530.3	Index 0 (spread of flame)		AWTA, Australia
	AS/NZ 3837-1998	Group 1		AWTA, Australia
	ASTM E84-20	Class A Certification - Standard Test Method for Surface Burning Characteristics of Building Materials		JECTEC, Japan
UV Testing	Standard	Test Chamber	Hours	Testing Origin
	SAE J1960-2004 Society of Automotive Engineers	Xenon Arc Atlas Ci4000 Xenon Weather-ometer	9648 / 10,000KJm2	AWTA, Australia
	ASTM G154	QUV – Accelerated Outdoor Evaluation	8000	Australia
	JIS K 5600	Sunshine Weather-ometer SUGA S80	10,000	Japan
	SAE J2527 / ISO4892-2	Xenon Arc Atlas Ci400 Xenon Weather-ometer	10,000KJm2	India
Salt Fog Resistance	Standard	Appearance Assessment		Testing Origin
	ASTM B117-2018	Blistering	Nil	AWTA, Australia
		Base Metal Corrosion	Nil	
		Loss of Adhesion	Nil	
		Other abnormalities	Nil	
		Exposure Period	500 hours	

Light Reflectance Value (LRV)	Standard	Test Result (CIE Tristimulus Value Y – Mean Results)				Testing Origin
	BS 8493-2008 + A1-2010	Burakku Suchi-ru	6.98	Neikiddo Moku	19.36	AWTA, Australia
Burakku Erumu		6.13	Riigaru Oku	17.76		
Chakooru Gurei		6.81	Kuri Masame	20.50		
Kakicha		5.77	Biera Oku	33.87		
Kurocha		6.23	Buraun Gurei	25.89		
Burakku Eboni		7.24	Kurashikku	39.83		
Weebu Mahogani		10.63	Oku	38.10		
Buraun Eboni		10.12	Supuringu Oku	47.75		

<b>Application</b>  Note: Ensure suitable fixing screws: 1 – for the substrate used, and 2 - avoid the potential for galvanic reaction. Bimetal or stainless steel screws are recommended.	Koshi Standard hollow section		Face fix to substrate or structure. Fully wrapped batten on all sides.  Installed using same methods as timber for decorative applications, adjusting for hollow section profile, and aluminium composition.
	Kabebari 2-section concealed fix batten with visible base plate		A 2-piece batten profile, simply screw base to substrate. Top section clips in to conceal screw fixings. Fully wrapped batten on all sides.  Most suited for applications across glazing or where base plate is upward facing, and partially exposed.
	Kabebari v2 2-section concealed fix batten with shrouded base plate.		A 2-piece batten profile, with a shrouded mill finished base plate. Wrapped batten cover section to 3 sides. Optional upgrade: Wrapped base plate available in specific profile sizes.  Fix base plate directly to substrate. Top section clips in to conceal screw fixings and base plate.  Most suited for applications where one face of the batten is not visible.
	Kabebari-T Suspended ceiling batten screen		A lightweight suspended ceiling system, the T section is suspended from the ceiling with Rondo rods or similar.  The Kabebari 2-section concealed fix batten is attached to the T section, forming a cavity for access to utilities or for acoustic mats.
	Prefab Screens Window-framed or non-window-framed		Prefabricated batten screens made from Koshi standard hollow sections or Kabebari concealed fix battens.  Made to as-built dimensions. Due to OHS screen sizes are restricted to a comfortable 2-person lift.

	<p>Title:</p> <p><b>Covet   Ever Art Wood® Decorative Wrapped Aluminium Batten Cladding</b></p>		
<p>Application (Continued)</p>	<p>Mizotsuki Bracket and bolt fix cladding system</p>		<p>Mizotsuki batten incorporates a full-length channel along the backside to which a bolt is fed through and affixed to an 'L' bracket.</p> <p>The 'L' bracket can be fixed directly to a structure or posts.</p> <p>Also suited to suspended ceiling applications.</p>
<p>Cleaning and maintenance</p>	<p>It is recommended that environmental dust and bird droppings are cleaned off the Ever Art Wood® surface on a regular basis to keep the surface in good condition. Clean with clean water via a hose or pressure washer (i.e. Karcher) at no closer than 1 metre to prevent mechanical abrasion. For stubborn marks try a non-abrasive cloth (i.e. sponge or microfiber and a well diluted neutral detergent) please consult the supplier.</p> <p>Coastal projects (i.e. within 500mtrs of a saltwater environment) should be hosed down with clean water at least every 3 months.</p>		
<p>Warranty</p>	<p>10 year manufacturer's warranty against surface delamination, warping and significant fading. Manufacturer's warranty available upon request.</p>		
<p>Sustainability</p>	<p>Aluminium is 100% recyclable and retains its properties indefinitely. Sustainability advantages of Ever Art Wood® include:</p> <ul style="list-style-type: none"> <li>• No removal of trees</li> <li>• No chemical maintenance or treatments – such as wood primers and stains, paints, insecticides etc.</li> <li>• Long-lasting material replacement due to deterioration</li> <li>• Aluminium is recyclable</li> <li>• Lightweight – savings in infrastructure</li> <li>• Lightweight - less transportation</li> <li>• No batch to batch variability</li> <li>• Minimal waste in manufacture (compared to milling timber)</li> <li>• Minimal site waste – all panels and battens can be cut to length in Japan.</li> </ul>		



DISCLAIMER - The information provided in this technical documentation has been sourced through independent testing of the Ever Art Wood product from accredited authorities and is accurate at the time of publication. The purpose is to provide you general information about the Ever Art Wood product, and does not constitute project specific building, construction or fire safety advice. Always defer to the Industry Standards, qualified engineers and certifying bodies. For further information about Ever Art Wood products or to discuss your project, please contact Covet.