

Ever Art Wood[®] Express Aluminium Cladding

The warmth of wood in a weather resistant, interlocking panel.



covet[®]



Covet International
 27 / 131 Hyde St
 Yarraville VIC 3013
 t: +613 93988128
 e: info@covet.com.au
 w: covet.com.au

Title:

Ever Art Wood® Express

Scale:


Rev:

8

Dwg no:

Product Overview

Country of origin	Japan			
Manufacturer's Quality Systems	ISO 9001 certified CE Certified EN1090 and EN15088			
Panel Manufacture	Ever Art Wood® Express is manufactured by roll forming a 1mm thick sheet of Ever Art Wood® Mokuzai Panel			
Panel Thickness	1mm			
Panel Length	Up to 4400mm			
Panel Height	25mm			
Join	Concealed fix, interlocking panels		2mm sheet – exposed 2mm sheet - wrapped	
Face Width	Typical 200 to 300mm (narrower available upon review)			
Panel Composition	0.8mm aluminium sheet (H5052-H32) Timber effect printed polymer film applied to surface (exterior grade) 0.2mm thickness			
Protection	Panels protected with adhesive film to decorative side for transport and handling.			
Fire Testing	Standard	Test Result		Testing Origin
	AS/NZ 3837-1998	Group 1		AWTA Melbourne, Australia NATA certified lab
	AS/NZ 1530.3	Index 0 (spread of flame)		AWTA Melbourne, Australia NATA certified lab
	BCA provision	BCA Deemed to Satisfy Provisions C1.9 (e)(v) of the 2019 NCC (Volume 1 – covering class 2-9 buildings) Independent report / note Art Wood has a 0.2mm polymer wrap applied to the surface and achieves a 0 spread of flame.		Olsson Fire & Risk Melbourne, Australia
	ASTM E84-20	Class A Certification - Standard Test Method for Surface Burning Characteristics of Building Materials		JECTEC Hamamatsu-City, Japan
UV Testing	Standard	Test Chamber	Hours	Testing Origin
	SAE J1960-2004 Society of Automotive Engineers.	Xenon Arc Atlas C14000 Xenon Weather-ometer	9648 / 10,000KJm2	AWTA Melbourne, Australia NATA certified lab
	ASTM G154	QUV – Accelerated Outdoor Evaluation	8000	Gale Pacific Internal Laboratory Melbourne, Australia
	JIS K 5600	Sunshine Weather-ometer SUGA S80	10,000	Japan
	SAE J2527 / ISO4892-2	Xenon Arc Atlas Ci400 Xenon Weather-ometer	10,000KJm2	India

	Title: Ever Art Wood® Express					
Salt Fog Resistance	Standard	Appearance Assessment			Testing Origin	
	ASTM B117-2018	Blistering	Nil		AWTA Melbourne, Australia NATA certified lab	
		Base Metal Corrosion	Nil			
		Loss of Adhesion	Nil			
		Other abnormalities	Nil			
Exposure Period	500 hours					
Light Reflectance Value (LRV)	Standard	Test Result (CIE Tristimulus Value Y – Mean Results)				Testing Origin
	BS 8493-2008 + A1-2010	Burakku Suchi-ru	6.98	Neikiddo Moku	19.36	AWTA Melbourne, Australia NATA certified lab
		Burakku Erumu	6.13	Riigaru Oku	17.76	
		Chakooru Gurei	6.81	Kuri Masame	20.50	
		Kakicha	5.77	Biera Oku	33.87	
		Kurocha	6.23	Buraun Gurei	25.89	
		Burakku Eboni	7.24	Kurashikku	39.83	
		Weebu Mahogani	10.63	Oku	38.10	
Buraun Eboni		10.12	Supuringu Oku	47.75		
Sustainability	Aluminium is 100% recyclable and retains its properties indefinitely. Sustainability advantages of Ever Art Wood® include: <ul style="list-style-type: none"> • No removal of trees • No chemical maintenance • Long lasting material/ doesn't need repeated replacement due to deterioration • Lightweight - less install infrastructure • Lightweight - less transportation • No batch to batch variability • Minimal waste in manufacture (compared to milling timber) • Minimal site waste – all panels and battens are cut to length in Japan. 					
Warranty	10 year manufacturer's warranty against surface delamination and significant fading. Manufacturer's warranty available upon request.					
Cleaning and maintenance	It is recommended that environmental dust and bird droppings are cleaned off the Ever Art Wood® surface on a regular basis to keep the surface looking in good condition. Clean with clean water via a hose or pressure washer (i.e. Karcher) at no closer than 1mtr to prevent mechanical abrasion. For stubborn marks try a non-abrasive cloth (i.e. sponge or microfiber and a well diluted neutral detergent) please consult the supplier. Coastal projects (i.e. within 500mtrs of a saltwater environment) should be hosed down at least every 3-6 months.					



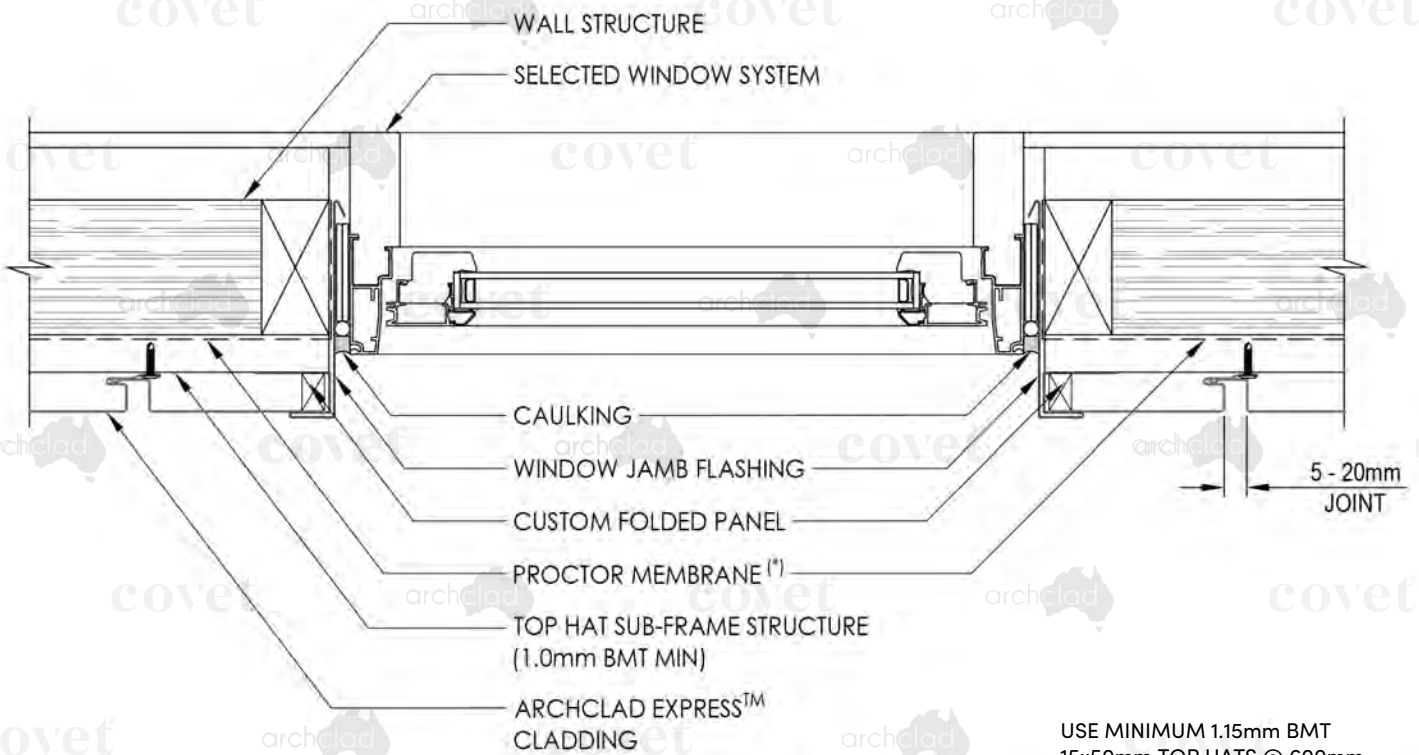
DISCLAIMER - The information provided in this technical documentation has been sourced through independent testing of the Ever Art Wood product from accredited authorities and is accurate at the time of publication. The purpose is to provide you general information about the Ever Art Wood product, and does not constitute project specific building, construction or fire safety advice. Always defer to the Industry Standards, qualified engineers and certifying bodies. If you would like further information about Ever Art Wood products or wish to discuss your project, please contact Covet on +613 9398 8128.



Covet International
 27 / 131 Hyde St, Yarrville VIC 3013
 t: +613 9398 8128 e: info@covet.com.au
 w: covet.com.au

Title: **EVER ART WOOD® EXPRESS
 & AC EXPRESS
 WINDOW JAMB FLASHING**

Scale: 1:5 Rev: A
 Dwg No: **AE-DT-W1**



USE MINIMUM 1.15mm BMT
 15x50mm TOP HATS @ 600mm
 CENTRES

**DETAIL - W1
 (WINDOW JAMB FLASHING)**

(*) PROCTOR MEMBRANE CAN BE
 INSTALLED BEHIND OR IN FRONT
 OF TOPHAT SUB-STRUCTURE

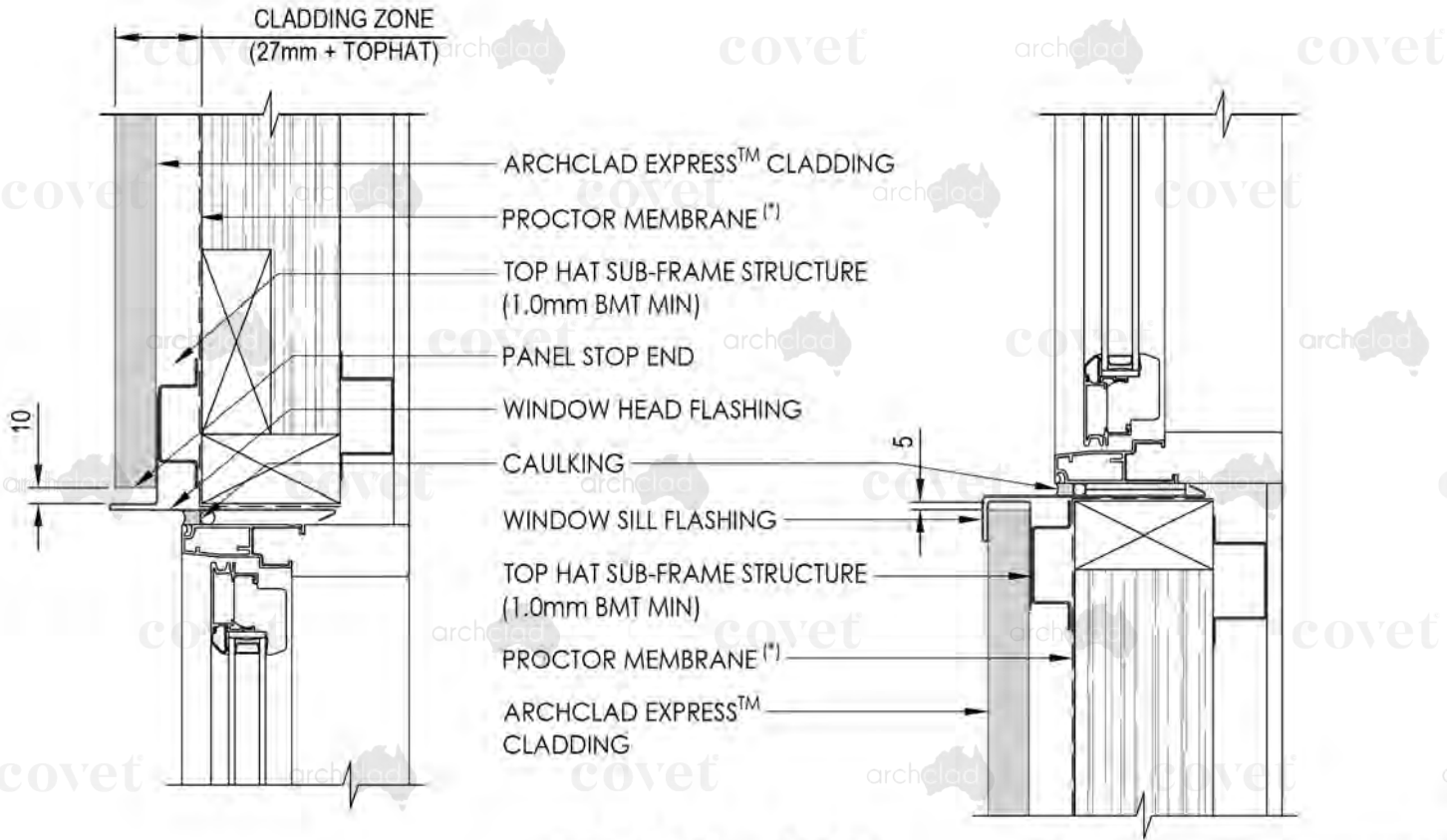




Covet International
 27 / 131 Hyde St, Yarraville VIC 3013
 t: +613 9398 8128 e: info@covet.com.au
 w: covet.com.au

Title: **EVER ART WOOD® EXPRESS
 & AC EXPRESS
 WINDOW HEAD & SILL FLASHING**

Scale: 1:5 Rev: A
 Dwg No: **AE-DT-W2**



**DETAIL - W2
 (WINDOW HEAD & SILL FLASHING)**

(*) PROCTOR MEMBRANE CAN BE INSTALLED BEHIND OR IN FRONT OF TOPHAT SUB-STRUCTURE

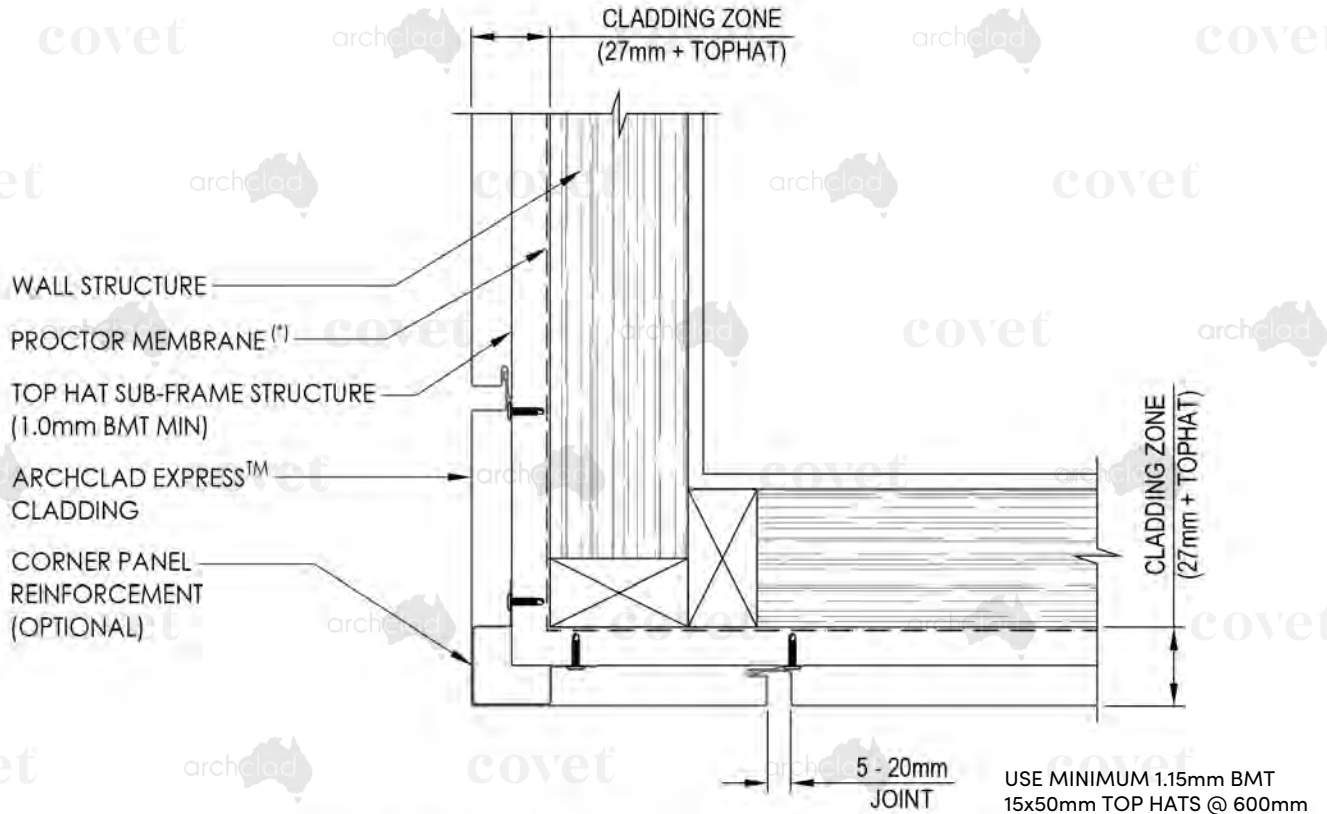




Covet International
 27 / 131 Hyde St, Yarraville VIC 3013
 t: +613 9398 8128 e: info@covet.com.au
 w: covet.com.au

Title: **EVER ART WOOD® EXPRESS
 & AC EXPRESS
 WALL - FOLDED CORNER PANEL**

Scale: 1:5 Rev: A
 Dwg No: **AE-DT-W3**



**DETAIL - W3
 (WALL - FOLDED CORNER PANEL - PLAN)**

(*) PROCTOR MEMBRANE CAN BE INSTALLED BEHIND OR IN FRONT OF TOPHAT SUB-STRUCTURE

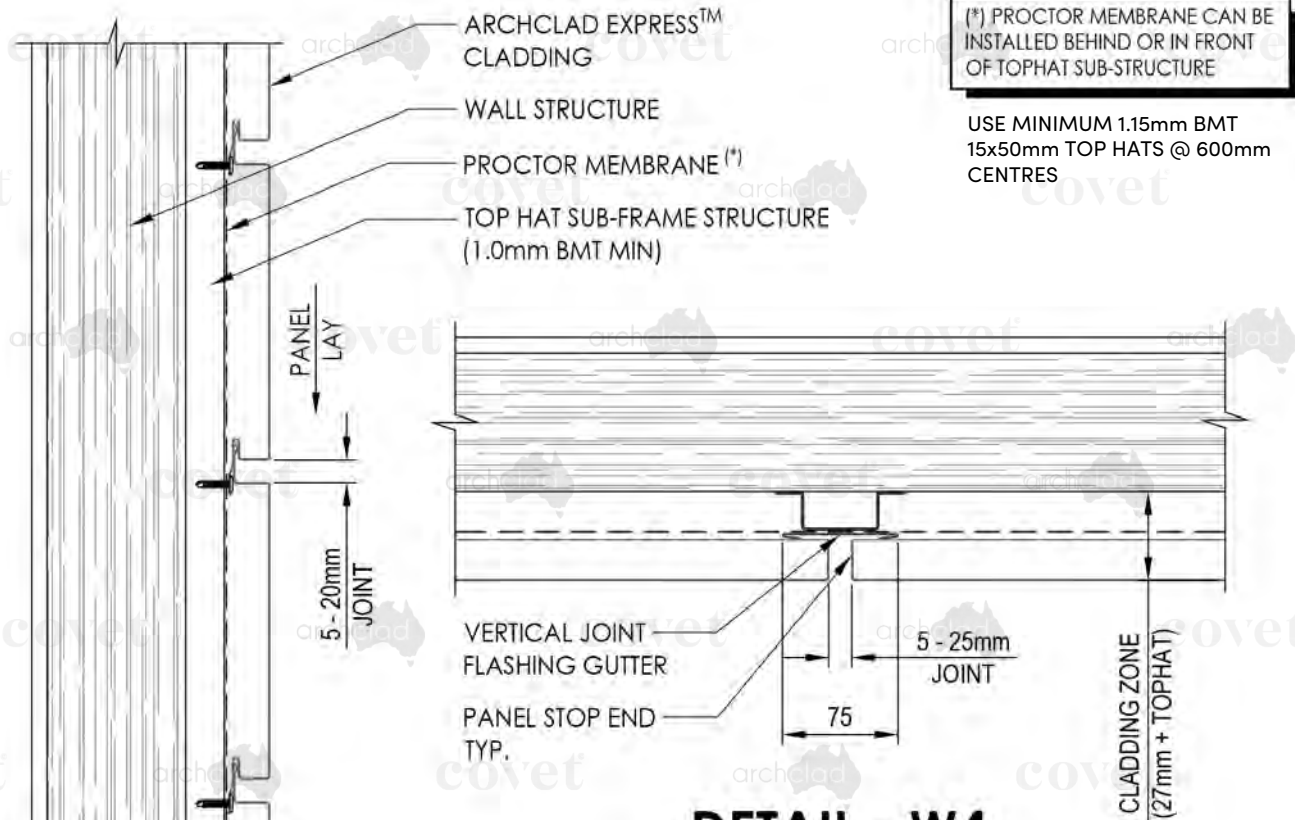




Covet International
 27 / 131 Hyde St, Yarraville VIC 3013
 t: +613 9398 8128 e: info@covet.com.au
 w: covet.com.au

Title: **EVER ART WOOD® EXPRESS
 & AC EXPRESS**
**HORIZONTAL WALL PANEL
 VERTICAL JOINT FLASHING**

Scale: 1:5 Rev: A
 Dwg No: **AE-DT-W4**



SECTION A-A

DETAIL - W4
**(HORIZONTAL WALL PANEL
 VERTICAL JOINT FLASHING - PLAN)**



The content contained within this document remains the intellectual property of Architectural Cladding Pty Ltd, may not be reproduced without consent, and subject to copyright.

A collaboration between

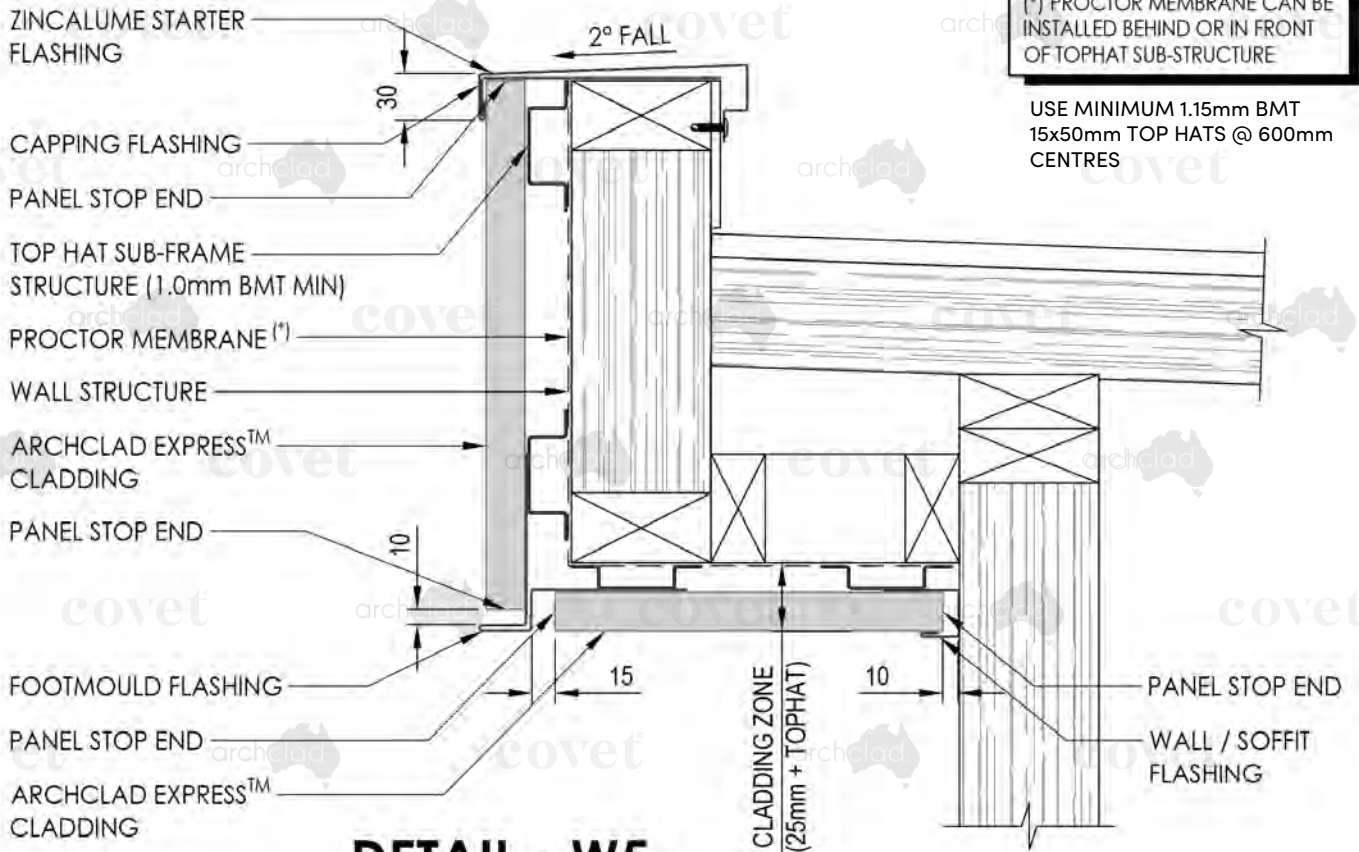




Covet International
 27 / 131 Hyde St, Yarraville VIC 3013
 t: +613 9398 8128 e: info@covet.com.au
 w: covet.com.au

Title: **EVER ART WOOD® EXPRESS
 & AC EXPRESS
 FASCIA/SOFFIT PANEL FLASHING**

Scale: 1:5 Rev: A
 Dwg No: **AE-DT-WS**



**DETAIL - W5
 (FASCIA / SOFFIT PANEL FLASHING)**



The content contained within this document remains the intellectual property of Architectural Cladding Pty Ltd, may not be reproduced without consent, and subject to copyright.

A collaboration between

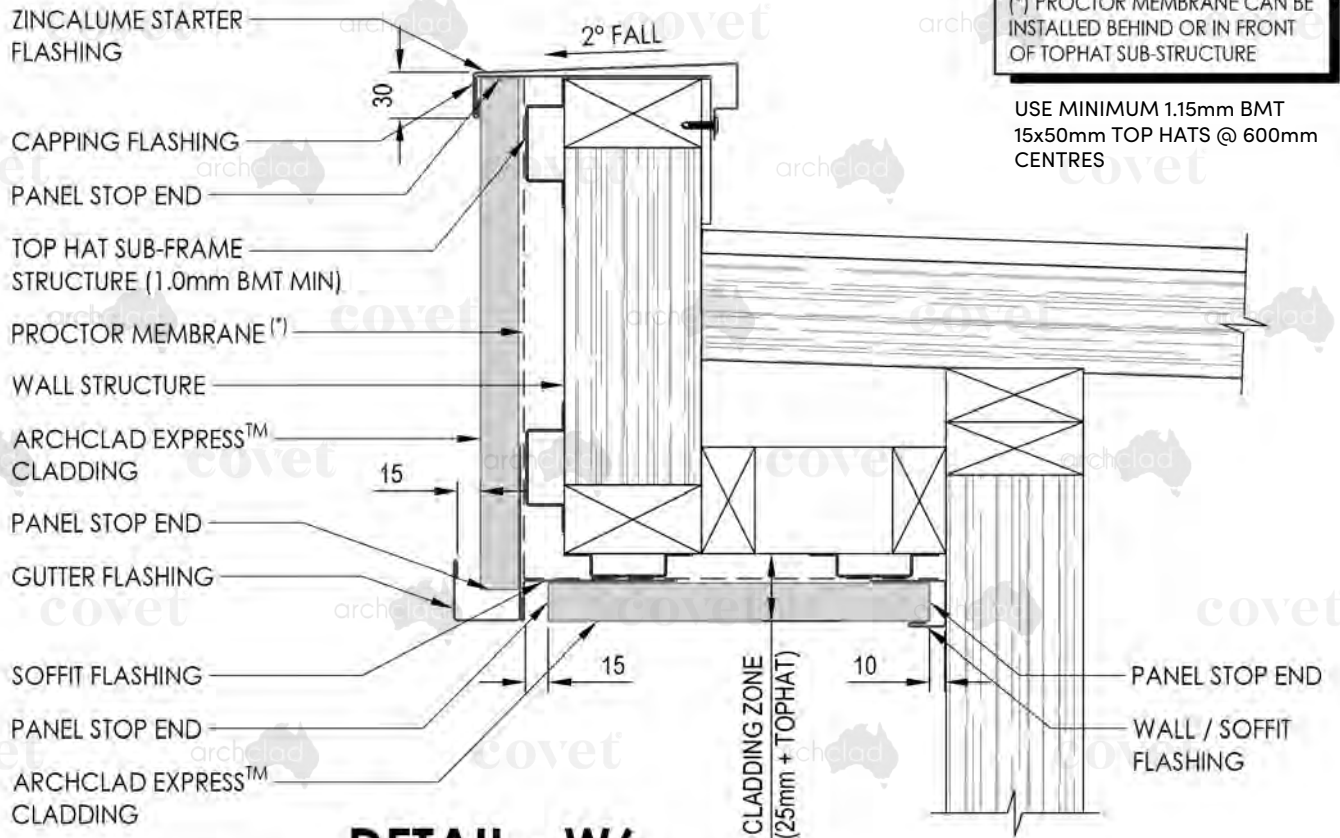




Covet International
 27 / 131 Hyde St, Yarraville VIC 3013
 t: +613 9398 8128 e: info@covet.com.au
 w: covet.com.au

Title: **EVER ART WOOD® EXPRESS
 & AC EXPRESS
 WALL BASE TRIM - GUTTER FLASHING**

Scale: 1:5 Rev: A
 Dwg No: **AE-DT-W6**



**DETAIL - W6
 (WALL BASE TRIM - GUTTER FLASHING)**



The content contained within this document remains the intellectual property of Architectural Cladding Pty Ltd, may not be reproduced without consent, and subject to copyright.

A collaboration between

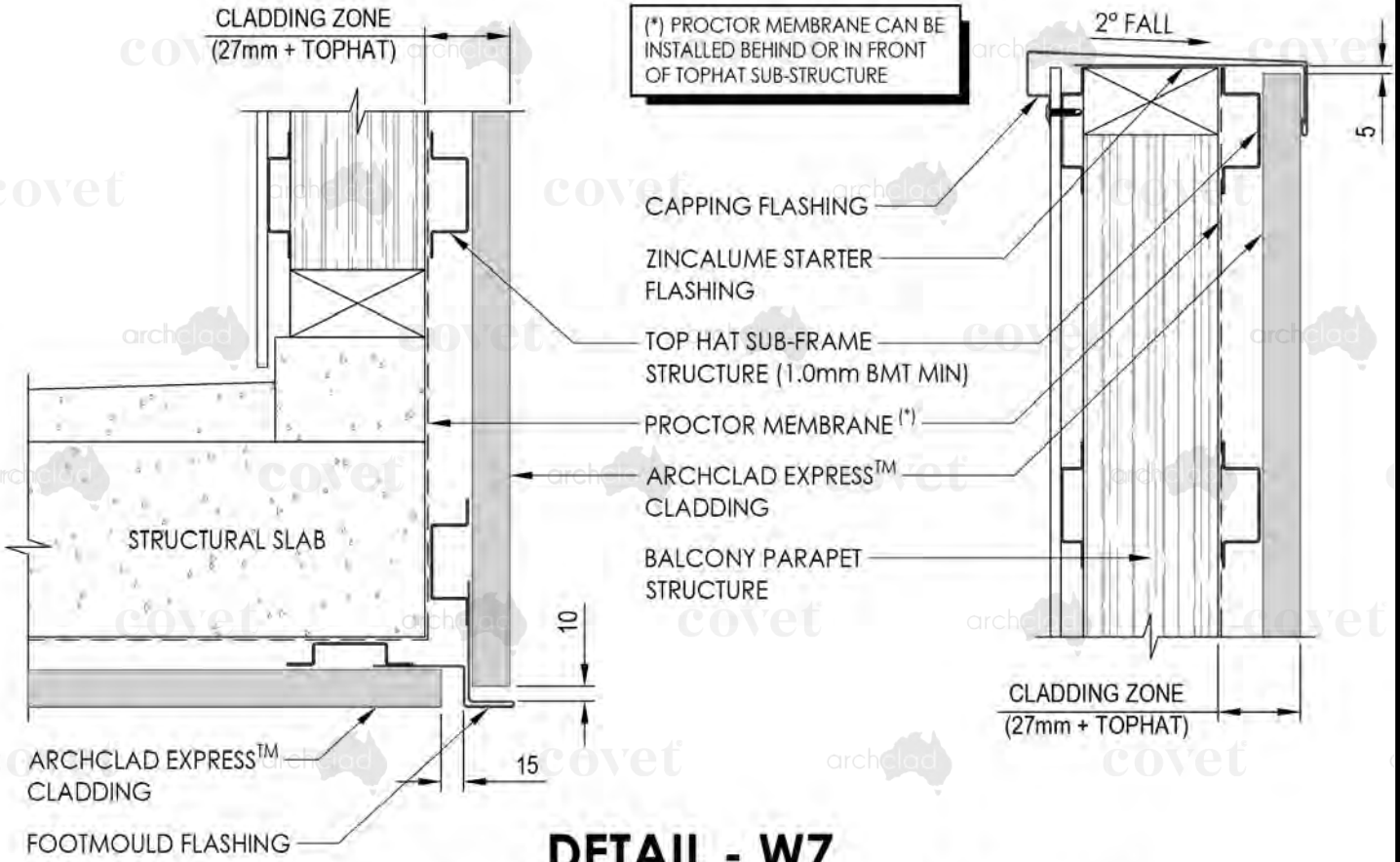




Covet International
 27 / 131 Hyde St, Yarraville VIC 3013
 t: +613 9398 8128 e: info@covet.com.au
 w: covet.com.au

Title: **EVER ART WOOD® EXPRESS
 & AC EXPRESS
 BALCONY PARAPET /
 SOFFIT CLADDING FLASHING**

Scale:	Rev:
1:5	A
Dwg No:	
AE-DT-W7	



DETAIL - W7

(BALCONY PARAPET / SOFFIT CLADDING FLASHING)



The content contained within this document remains the intellectual property of Architectural Cladding Pty Ltd, may not be reproduced without consent, and subject to copyright.

A collaboration between

